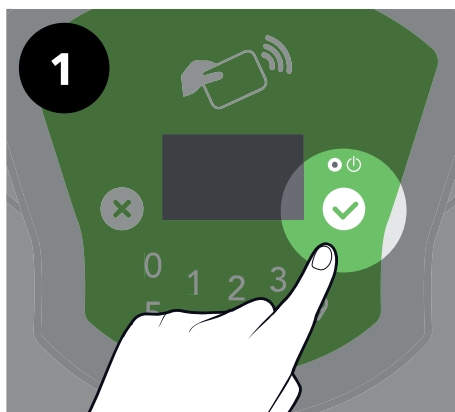


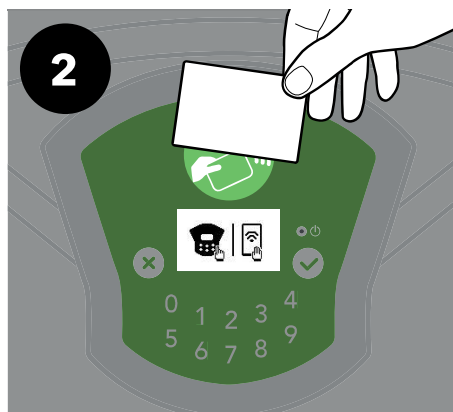


ACTIVATING YOUR VÉLIB' OR NAVIGO CARD FOR THE FIRST TIME

YOU'VE UPDATED YOUR SUBSCRIPTION AND RECEIVED A NEW VÉLIB' CARD, OR YOU CAN USE YOUR NAVIGO CARD



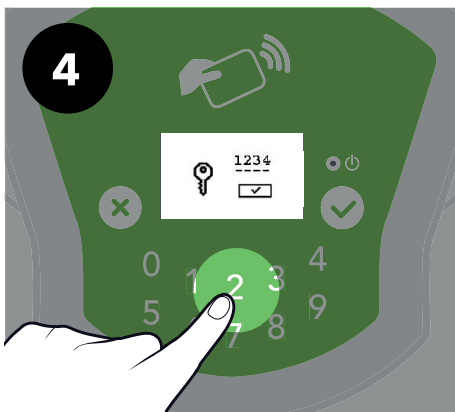
Press the «V» key on the V-Box keypad



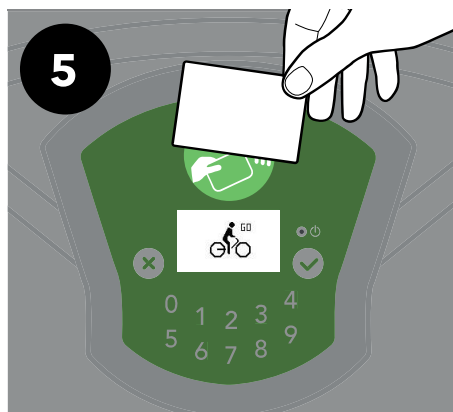
Scan your card (Vélib' or Navigo)



Enter and then confirm your 8-digit access code by pressing the «V» key on the V-Box keypad



Enter and then confirm your 4-digit by pressing the «V» key on the V-Box keypad



Scan your card again, the «Go» symbol appears

**YOUR CARD IS
ACTIVATED, YOU CAN
TAKE YOUR VÉLIB'**

On your next journey,
simply scan your card
on the V-Box

CUSTOMER SERVICE : 01 76 49 1234 (COST OF A LOCAL CALL)