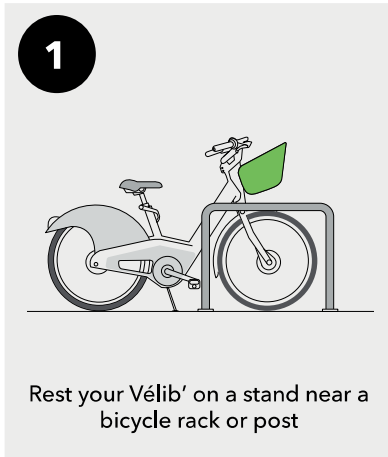
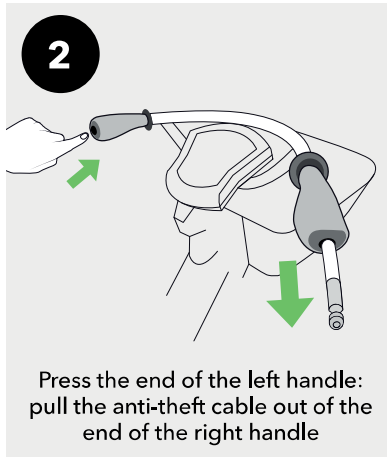




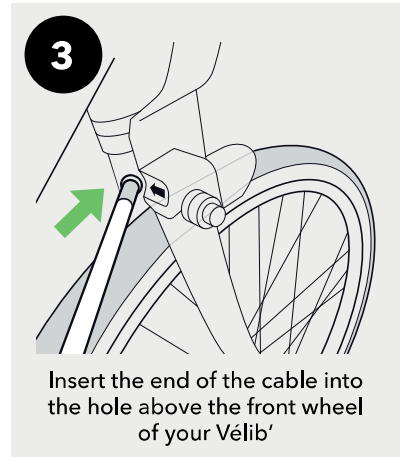
TAKING A BREAK ON YOUR JOURNEY



1 Rest your Vélib' on a stand near a bicycle rack or post



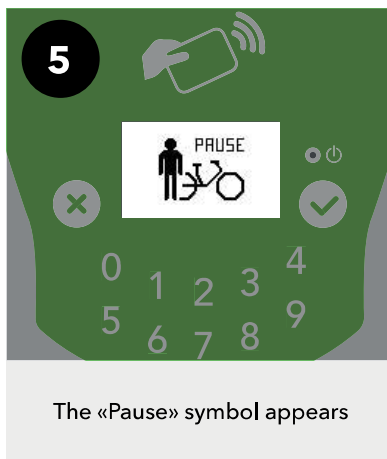
2 Press the end of the left handle: pull the anti-theft cable out of the end of the right handle



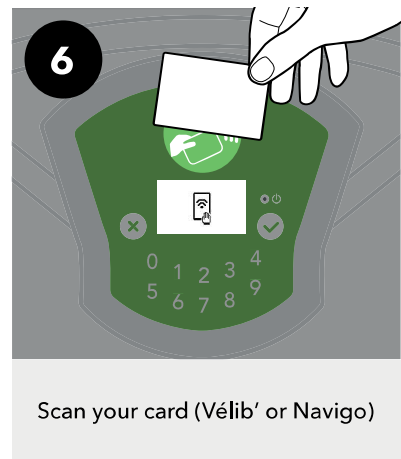
3 Insert the end of the cable into the hole above the front wheel of your Vélib'



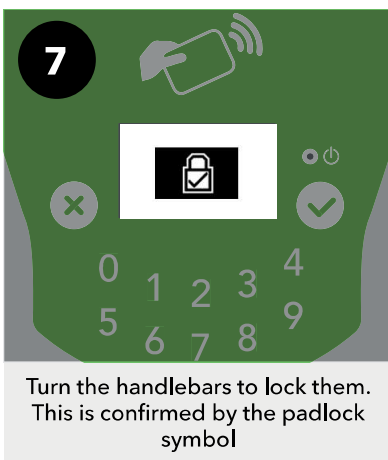
4 When you stop, press the «V» key on the V-Box



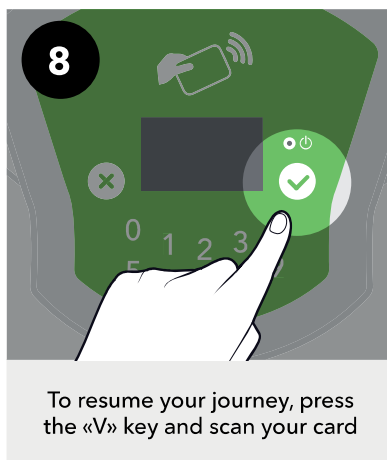
5 The «Pause» symbol appears



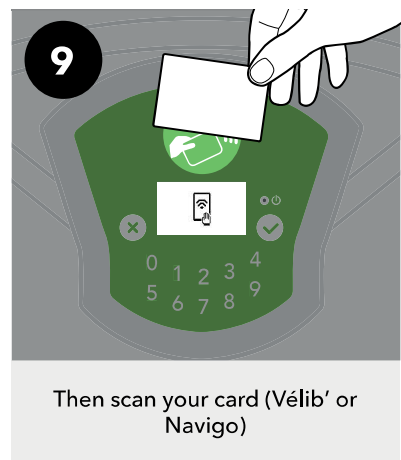
6 Scan your card (Vélib' or Navigo)



7 Turn the handlebars to lock them. This is confirmed by the padlock symbol



8 To resume your journey, press the «V» key and scan your card



9 Then scan your card (Vélib' or Navigo)